



Kai Model Floor Plan 650 Ft²



- **20' X 25' Living 500 Ft²**
- **Covered Lanai 150 Ft²**
- **Total 650 Ft²**



August 2010



Kai Model Artist Renderings

Aerial



Front



Back



Right



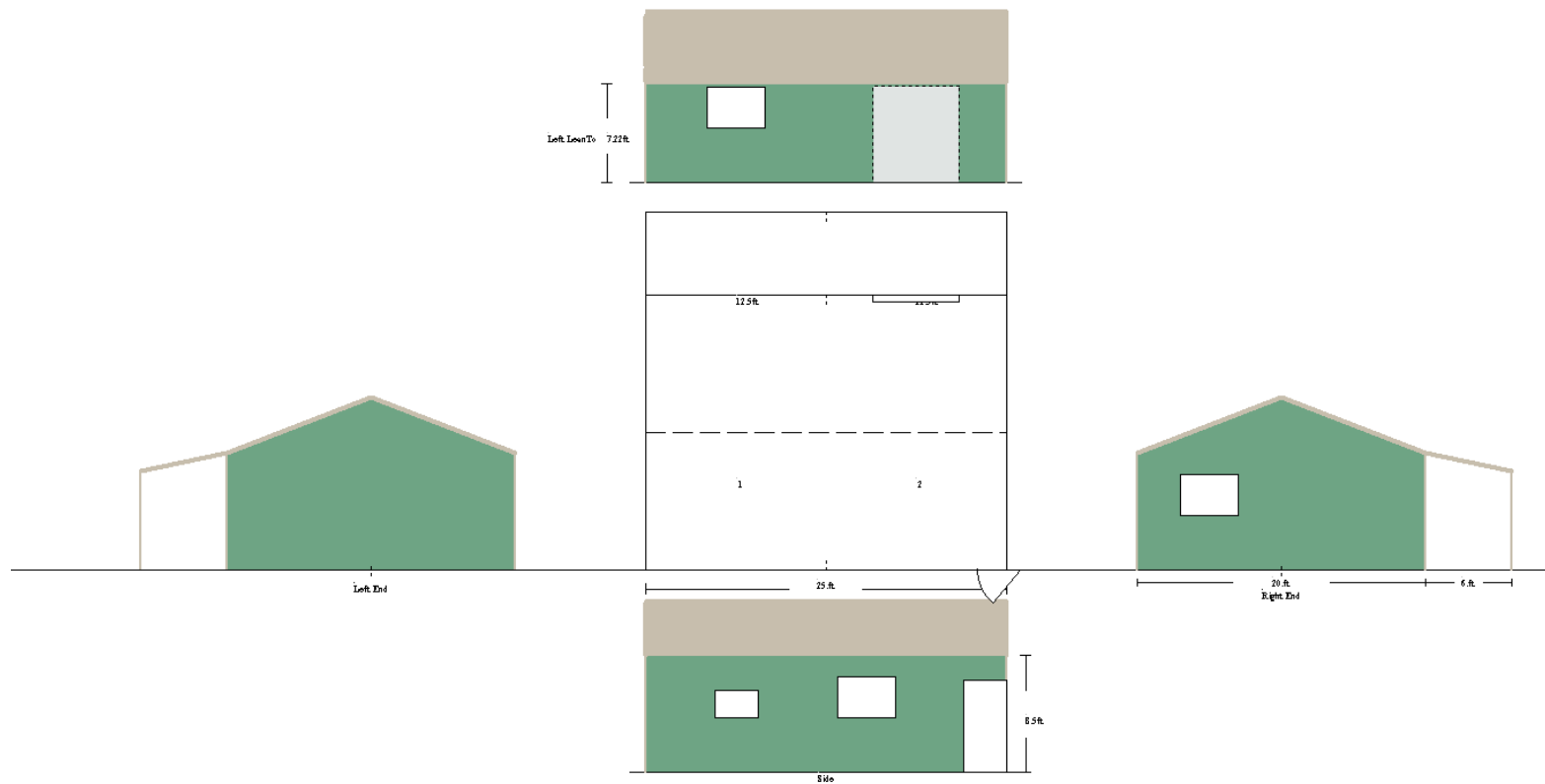
Left



August 2010



Kai Model Multi-Build Layout



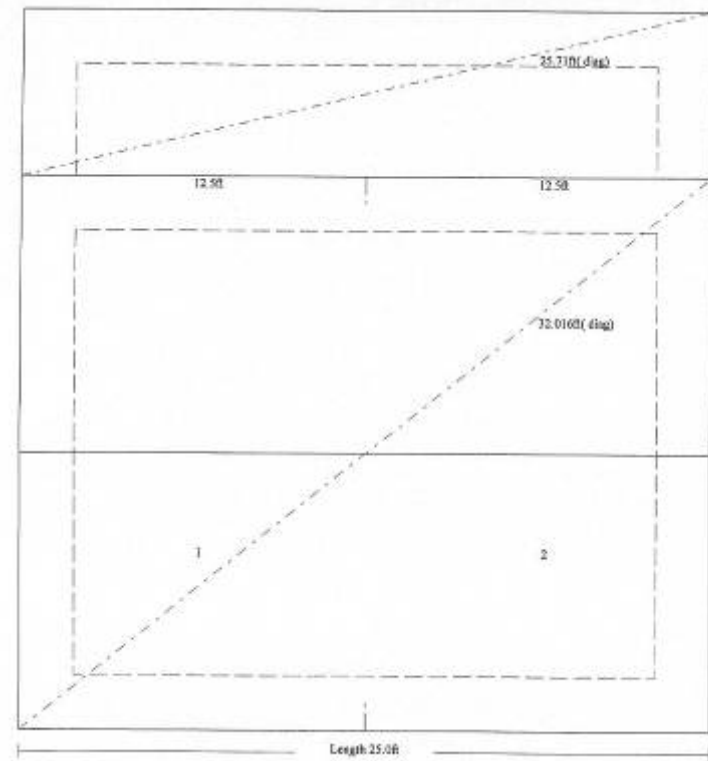


Kai Model

Structural Details and Foundation Guideline

Structural Details

DIMENSIONS: Span 20.0 Length 25.0 Eaves 8.5 Apex 12.54 Roof Pitch 4.85:12
 Left LeanTo added. Span=6.0ft Style= 2 Pelmet=0.0ft For 2 bays From the Front
 PURLINS. 2 rows of Z6X16 @ 12.8ft long and 3.07ft Spacing.
 SIDE GIRTS. 0 rows of Z4X16 @ 12.8ft long and 3.49ft Spacing.
 END GIRTS. 0 rows of Z4X16 @ 5.63ft long and 1.ft Spacing.
 ROOF PITCH 2.55:12 L RAFTERS. 2C08X16
 RAFTERS. 8 x 2C08X16 @ 9.44ft long
 COLUMNS. 8 x 2C08X16 @ 8.32ft long
 EAVES PURLIN. 6 x C06X16 @ 12.5ft long
 PURLINS. 3 rows of Z6X16 @ 12.8ft long and 3.46ft Spacing.
 SIDE GIRTS. 3 rows of Z4X16 @ 12.8ft long and 2.75ft Spacing.
 END GIRTS. 4 rows of Z4X16 @ 9.3ft long and 2.75ft Spacing.
 ENDWALL COLUMNS. 1 per end of C08X14 ROOF PITCH 22.0Deg
 Classic Rib 26GA Ptd Light Stone ROOF SHEETS. @ 10.94ft long
 Classic Rib 26GA Ptd Sierra Green WALL SHEETS. @ 8.5ft long
 ROOF FASTENERS. 12-14 X 1 7/8 Crest Fixing Tek Ptd
 PURLIN/GIRT FASTENERS. 14x1 Screw Tek Hex Bare CL3 H/Duty
 FRAME CONNECTIONS by 5/8in x 1 1/4 Bolt Ass High Tensile
 4 Knee Braces Used @ 5.4ft of 4in 16G CEE - Knee Brace Start Height = 5.03ft
 2 Apex Braces Used @ 6.7ft of 4in 16G CEE
 2 Downspout drops requiring 2 x 10ft Lths of pipe.
 320ft of Bracing Strap (100ft roll) 2 x 16G Required, Supplied as 4 X 100ft rolls.
 X Bracing requires 315ft of 2in x 16G Strapping
 Flybracing included at 8.25ft for EndWall mullions.
 and at 8.0ft Max for interior frame rafters and columns with wall girts.
 * Base angle provided in lieu of bottom girt.
 Monolithic Concrete Slab Edge Estimate, edge 12in wide by 12in deep
 with (1)-#4 at top of slab edge and (1)-#4 at bottom of slab edge





Kai Model

- Engineered Drawings for Building and Foundation
- Structural Steel for Building
- Steel Framing all External Doors and Windows
- All Bolts and Fasteners for Erection including Color-Matched screws
- Gutters and Downspouts
- EZ Seal Insulation for Roof (R12) and for Walls (R8)
- 26 Gauge Steel Classic Rib Paneling Siding and Roofing
- TelStar Steel 3' X 6'8" Steel Door with Window and Round Handle Lockset

- Windows and Patio door are NOT included