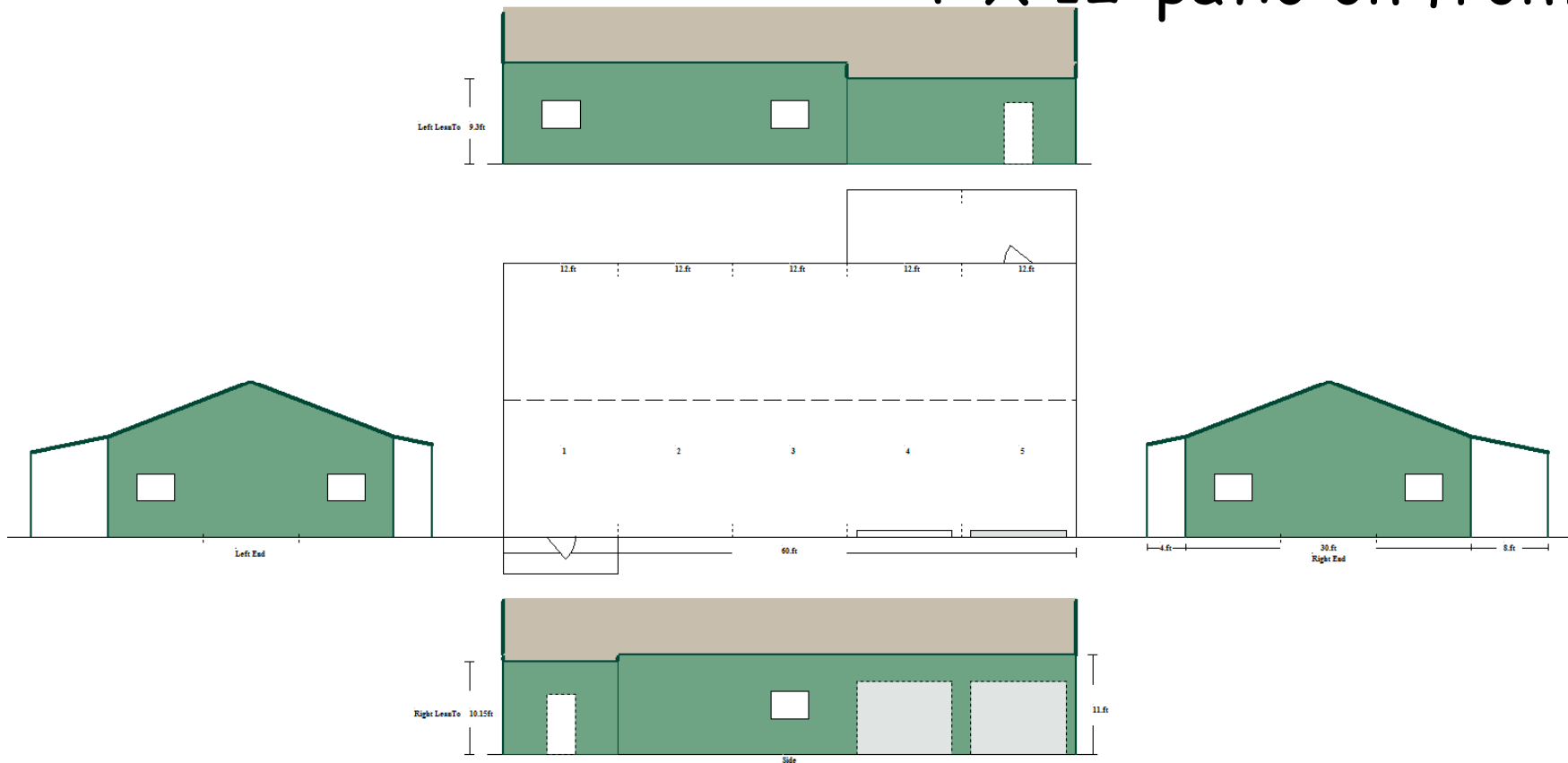




Home Shell 2,040 sq ft
30' X 60' X 11'
8' X 24' patio on back
4' X 12' patio on front



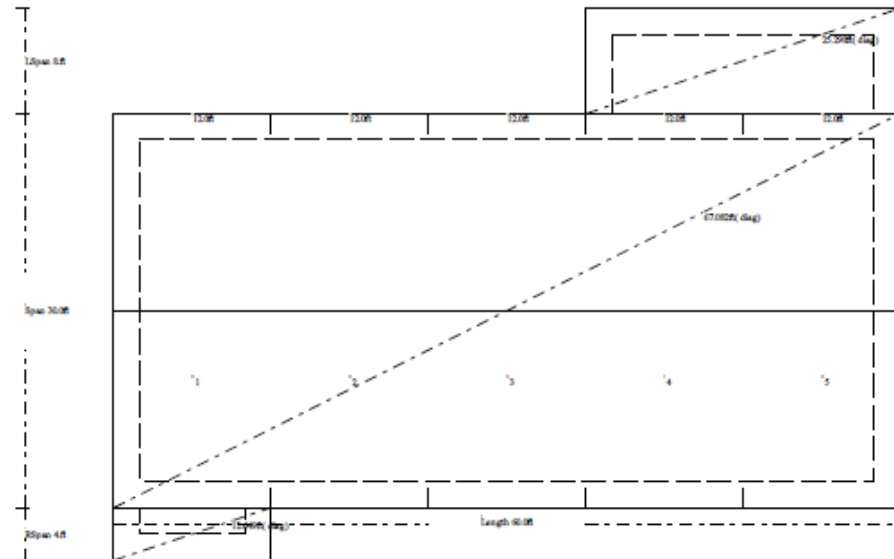


Home Shell 2,040 sq ft 30' X 60' X 11' 8' X 24' patio on back 4' X 12' patio on front

Structural Details

DIMENSIONS: Span 30.0 Length 60.0 Eaves 11.0 Apex 17.06 Roof Pitch 4.85:12
 Left LeanTo added. Span=8.0ft Style= 2 Pelmet=0.0ft For 2 bays From the Rear
 PURLINS. 4 rows of Z6X16 @ 12.3ft long and 2.04ft Spacing.
 SIDE GIRTS. 0 rows of Z4X16 @ 12.3ft long and 3.02ft Spacing.
 END GIRTS. 0 rows of Z4X16 @ 7.47ft long and 1.1ft Spacing.
 ROOF PITCH 2.55:12 L RAFTERS. C10X14
 Right LeanTo added. Span=4.0ft Style= 2 Pelmet=0.0ft For 1 bays From the Front
 PURLINS. 2 rows of Z6X16 @ 12.3ft long and 2.04ft Spacing.
 SIDE GIRTS. 0 rows of Z4X16 @ 12.3ft long and 3.3ft Spacing.
 END GIRTS. 0 rows of Z4X16 @ 3.47ft long and 1.1ft Spacing.
 ROOF PITCH 2.55:12 R RAFTERS. C10X14
 RAFTERS. 12 x C10X12 @ 14.58ft long
 COLUMNS. 12 x C10X12 @ 10.93ft long
 EAVES PURLIN. 13 x C06X16 @ 12.0ft long
 PURLINS. 7 rows of Z6X16 @ 12.3ft long and 2.25ft Spacing.
 SIDE GIRTS. 5 rows of Z4X16 @ 12.3ft long and 2.15ft Spacing.
 END GIRTS. 8 rows of Z4X16 @ 9.52ft long and 2.13ft Spacing.
 APEX GIRTS. 2 applied.
 ENDWALL COLUMNS. 2 per end of C08X14 ROOF PITCH 22.0Deg
 Classic Rib 26GA Ptd Light Stone ROOF SHEETS. @ 16.33ft long
 Classic Rib 26GA Ptd Sierra Green WALL SHEETS. @ 11.1ft long
 ROOF FASTENERS. 12-14 X 1 7/8 Crest Fixing Tek Ptd
 PURLIN/GIRT FASTENERS. 14x1 Screw Tek Hex Bare CL3 H/Duty
 FRAME CONNECTIONS by 5/8in x 1 1/4 Bolt Ass High Tensile
 8 Knee Braces Used @ 6.5ft of 6in 16G CEE - Knee Brace Start Height = 7.08ft
 4 Apex Braces Used @ 10.0ft of 6in 16G CEE
 4 Downspout drops requiring 5 x 10ft Lths of pipe.
 902ft of Bracing Strap (100ft roll) 1 1/2 x 16G Required, Supplied as 10 X 100ft rolls.
 X Bracing requires 888ft of 1 1/2in x 16G Strapping Single
 Flybracing included at 8.51ft for EndWall mullions.
 and at 8.0ft Max for interior frame rafters and columns with wall girts.
 * Base angle provided in lieu of bottom girt.
 Monolithic Concrete Slab Edge Estimate, edge 12in wide by 12in deep
 with (1)-#4 at top of slab edge and (1)-#4 at bottom of slab edge

Steel Buildings, Inc



Information provided for planning purposes only. Exact details will be provided with engineered drawings.





Home Shell 2,040 sq ft
30' X 60' X 11'
8' X 24' patio on back
4' X 12' patio on front

Includes:

- 1) Structural Blue line Drawings for Building and Foundation
- Building engineered for Wind Speed 105 Exposure C
- 2) Structural Steel for Building and Patio Areas
- 3) 26 gauge Classic Rib Siding in your Choice of Colors
- 4) Gutters and Downspouts
- 5) 2' on center walls and Roof
- 6) 2 Steel Personal access doors with Window
- 7) 2 Residential garage doors 10' X 8'
- 8) EZ Seal Insulation for Roof and Walls
- 9) Framing Steel for 8 4' X 3' Windows
- Windows not included
- 10) All included Building Materials Delivered to
Truck Accessible Jobsite

