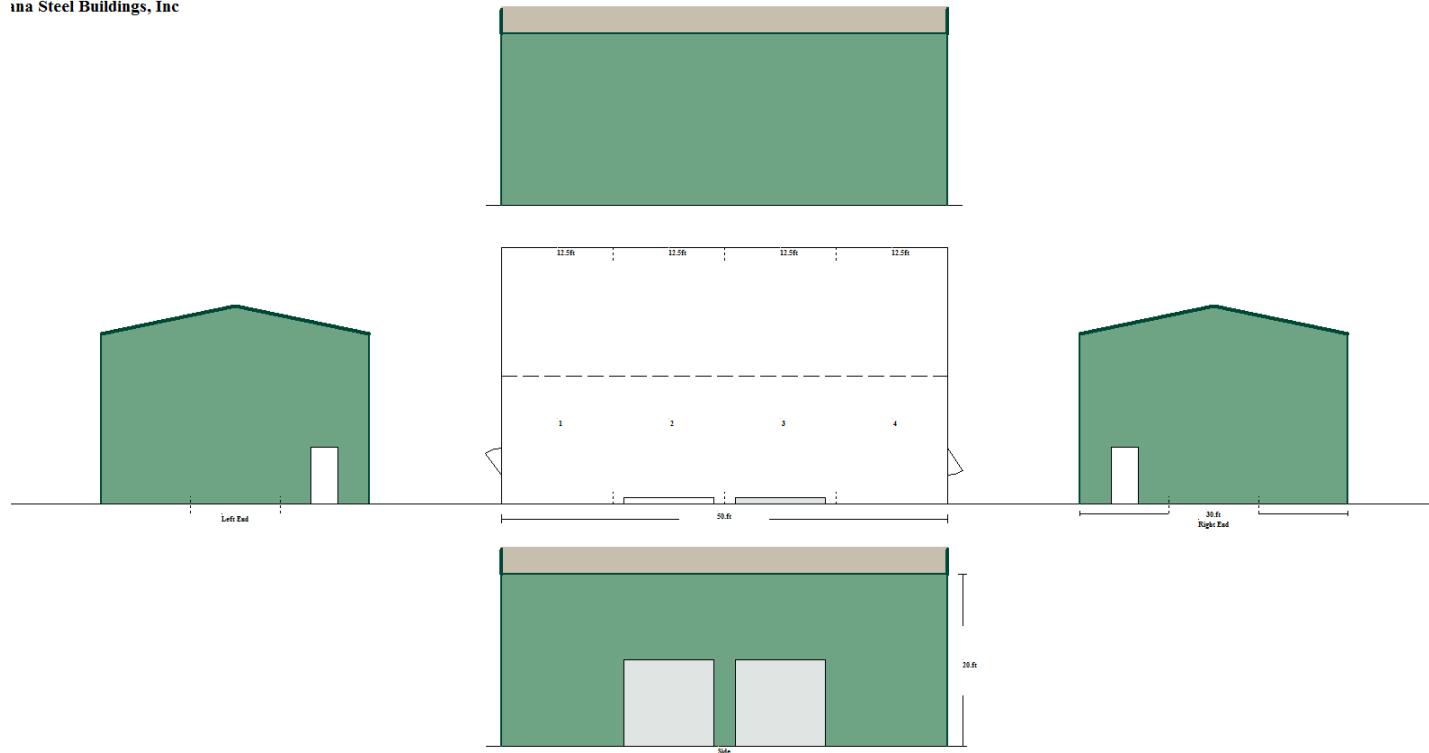




# Warehouse 1,800 square feet

Designed by:  
OHANA Steel Buildings, Inc



November, 2009



# Warehouse Structural Details and Foundation Guideline

## Structural Details

DIMENSIONS: Span 30.0 Length 50.0 Eaves 20.0 Apex 23.19 Roof Pitch 2.55:12

RAFTERS. 16 x 2C12X12 @ 13.59ft long

COLUMNS. 16 x 2C12X12 @ 20.0ft long

EAVES PURLIN. 8 x C06X16 @ 12.5ft long

PURLINS. 4 rows of Z6X16 @ 12.8ft long and 3.74ft Spacing.

SIDE GIRTS. 6 rows of Z6X16 @ 12.8ft long and 3.29ft Spacing.

END GIRTS. 7 rows of Z4X16 @ 9.3ft long and 3.29ft Spacing.

ENDWALL COLUMNS. 2 per end of 2C12X14 ROOF PITCH 12.0Deg

Classic Rib 26GA Ptd Light Stone ROOF SHEETS. @ 15.5ft long

Classic Rib 26GA Ptd Sierra Green WALL SHEETS. @ 20.ft long

ROOF FASTENERS. 12-14 X 1 7/8 Crest Fixing Tek Ptd

PURLIN/GIRT FASTENERS. 14x1 Screw Tek Hex Bare CL3 H/Duty

FRAME CONNECTIONS by 5/8in x 1 1/4 Bolt Ass High Tensile

12 Knee Braces Used @ 9.9ft of 8in 14G CEE - Knee Brace Start Height = 12.28ft

6 Apex Braces Used @ 10.0ft of 8in 14G CEE

2 Downspout drops requiring 4 x 10ft Lths of pipe.

1186ft of Bracing Strap (100ft roll) 1 1/2 x 16G Required, Supplied as 12 X 100ft roll

X Bracing requires 1165ft of 1 1/2in x 14G Strapping Doubled

Strap bracing supplied is to be fitted Doubled up

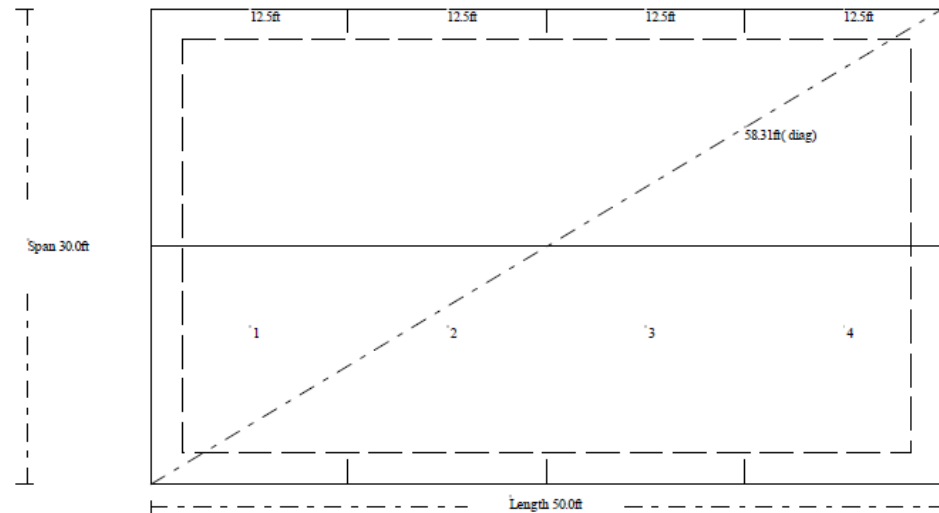
Flybracing included at 9.88ft for EndWall mullions.

and at 8.0ft Max for interior frame rafters and columns with wall girts.

\* Base angle provided in lieu of bottom girt.

Monolithic Concrete Slab Edge Estimate, edge 12in wide by 15in deep

with (1)-#4 at top of slab edge and (1)-#4 at bottom of slab edge





# Warehouse 30 X 50 X 20

- Engineered Drawings for Building and Foundation
- Structural Steel for Building
- Steel Framing all Doors
- All Bolts and Fasteners for Erection including Color-Matched screws
- Gutters and Downspouts
- EZ Seal Insulation for Roof
- 26 Gauge Steel Classic Rib Paneling Siding and Roofing
- 2 TelStar Steel 3' X 6'8" Steel Door
- 2 Clopay Canister Doors 10' X 10'