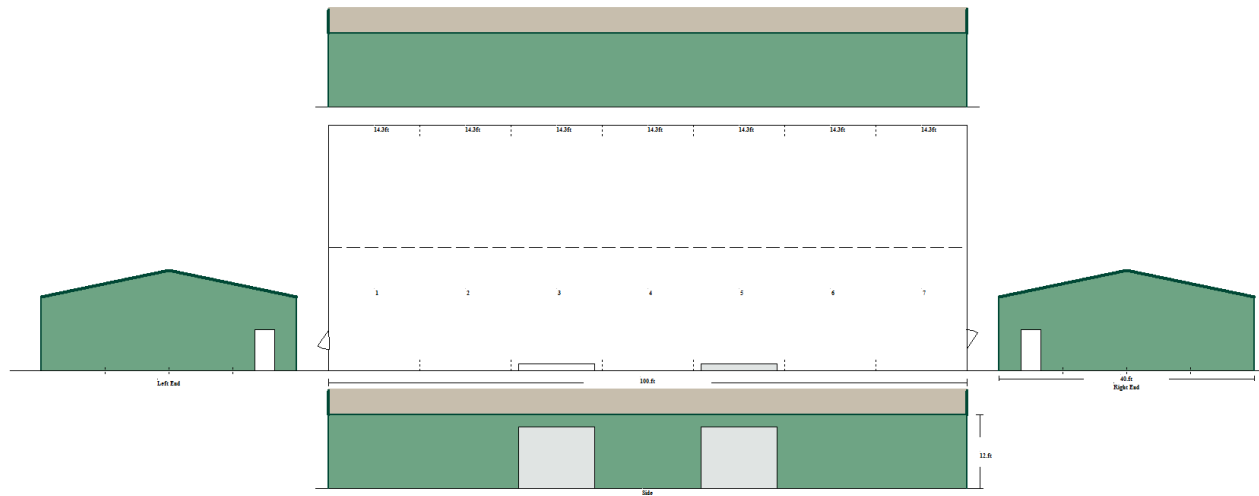




# Warehouse

## 4,000 square feet

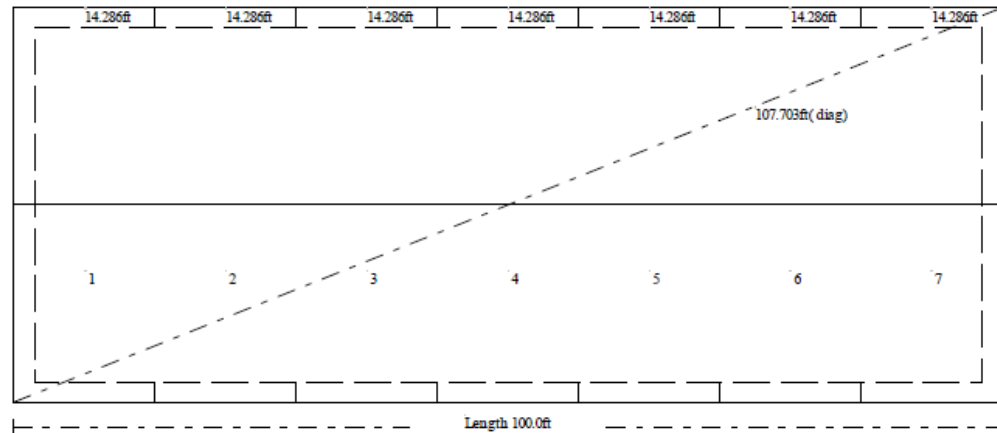




# Warehouse Structural Details and Foundation Guideline

## Structural Details

DIMENSIONS: Span 40.0 Length 100.0 Eaves 12.0 Apex 16.25 Roof Pitch 2.55:12  
 RAFTERS. 28 x 2C12X14 @ 18.7ft long  
 COLUMNS. 28 x 2C12X14 @ 12.0ft long  
 EAVES PURLIN. 14 x C06X16 @ 14.29ft long  
 PURLINS. 6 rows of Z6X16 @ 14.59ft long and 3.34ft Spacing.  
 SIDE GIRTS. 4 rows of Z6X16 @ 14.59ft long and 2.94ft Spacing.  
 END GIRTS. 5 rows of Z4X16 @ 9.55ft long and 2.94ft Spacing.  
 ENDWALL COLUMNS. 3 per end of C10X14 ROOF PITCH 12.0Deg  
 Classic Rib 26GA Ptd Light Stone ROOF SHEETS. @ 20.61ft long  
 Classic Rib 26GA Ptd Sierra Green WALL SHEETS. @ 12.0ft long  
 ROOF FASTENERS. 12-14 X 1 7/8 Crest Fixing Tek Ptd  
 PURLIN/GIRT FASTENERS. 14x1 Screw Tek Hex Bare CL3 H/Duty  
 FRAME CONNECTIONS by 5/8in x 1 1/4 Bolt Ass High Tensile  
 24 Knee Braces Used @ 7.2ft of 8in 14G CEE - Knee Brace Start Height = 6.69ft  
 12 Apex Braces Used @ 13.3ft of 8in 14G CEE  
 6 Downspout drops requiring 8 x 10ft Lths of pipe.  
 1632ft of Bracing Strap (100ft roll) 1 1/2 x 16G Required, Supplied as 17 X 100ft rolls.  
 X Bracing requires 1611ft of 1 1/2in x 14G Strapping Doubled  
 Strap bracing supplied is to be fitted Doubled up  
 Flybracing included at 8.81ft for EndWall mullions.  
 and at 8.0ft Max for interior frame rafters and columns with wall girts.  
 \* Base angle provided in lieu of bottom girt.  
 Monolithic Concrete Slab Edge Estimate, edge 12in wide by 12in deep  
 with (1)-#5 at top of slab edge and (1)-#4 at bottom of slab edge





# Warehouse 40 X 100 X 12

- Engineered Drawings for Building and Foundation
- Structural Steel for Building
- Steel Framing all Doors
- All Bolts and Fasteners for Erection including Color-Matched screws
- Gutters and Downspouts
- EZ Seal Insulation for Roof
- 26 Gauge Steel Classic Rib Paneling Siding and Roofing
- 2 TelStar Steel 3' X 6'8" Steel Door
- 2 Clopay Canister Doors 10' X 12'