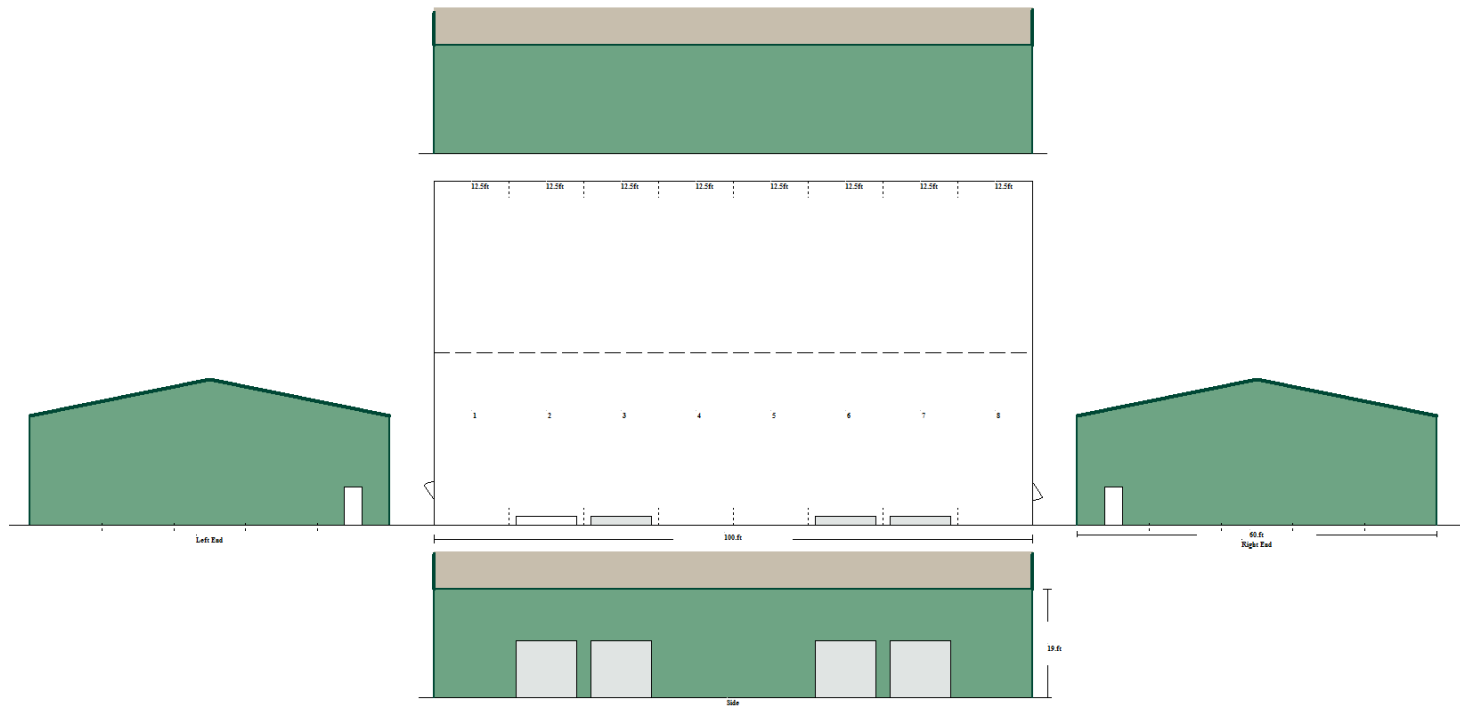




Warehouse 6,000 square feet

roduced by:
hana Steel Buildings, Inc



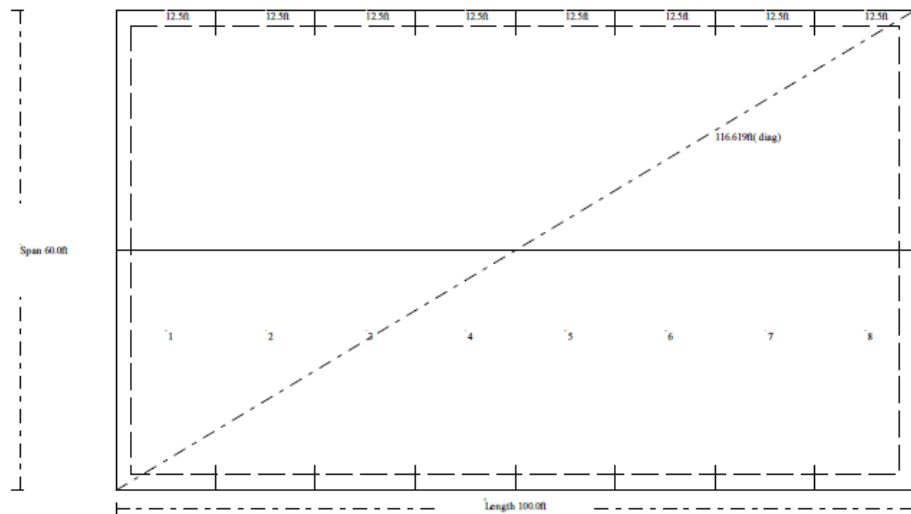


Warehouse

Structural Details and Foundation Guideline

Structural Details

DIMENSIONS: Span 60.0 Length 100.0 Eaves 19.0 Apex 25.38 Roof Pitch 2.55:12
 RAFTERS. 32 x 2C14X12 @ 28.72ft long
 COLUMNS. 32 x 2C14X12 @ 19.0ft long
 EAVES PURLIN. 16 x C06X16 @ 12.5ft long
 PURLINS. 8 rows of Z6X12 @ 12.8ft long and 3.78ft Spacing.
 SIDE GIRTS. 5 rows of Z6X16 @ 12.8ft long and 3.75ft Spacing.
 END GIRTS. 6 rows of Z6X16 @ 11.63ft long and 3.75ft Spacing.
 ENDWALL COLUMNS. 4 per end of 2C14X12 ROOF PITCH 12.0Deg
 Classic Rib 26GA Ptd Light Stone ROOF SHEETS. @ 30.84ft long
 Classic Rib 26GA Ptd Sierra Green WALL SHEETS. @ 19. ft long
 ROOF FASTENERS. 12-14 X 1 7/8 Crest Fixing Tek Ptd
 PURLIN/GIRT FASTENERS. 14x1 Screw Tek Hex Bare CL3 H/Duty
 FRAME CONNECTIONS by 5/8in x 1 1/4 Bolt Ass High Tensile
 28 Knee Braces Used @ 13.3ft of 6in 12G CEE - Knee Brace Start Height = 10.68ft
 14 Apex Braces Used @ 20.0ft of 6in 12G CEE
 8 Downspout drops requiring 16 x 10ft Lths of pipe.
 3216ft of Bracing Strap (100ft roll) 2 x 14G Required, Supplied as 33 X 100ft rolls.
 X Bracing requires 3174ft of 2in x 14G Strapping Doubled
 Strap bracing supplied is to be fitted Doubled up
 Flybracing included at 11.25ft for EndWall mullions.
 and at 8.0ft Max for interior frame rafters and columns with wall girts.
 * Base angle provided in lieu of bottom girt.
 Monolithic Concrete Slab Edge Estimate, edge 12in wide by 30in deep
 with (1)-#4 at top of slab edge and (1)-#4 at bottom of slab edge





Warehouse 60 X 100 X 19

- Engineered Drawings for Building and Foundation
- Structural Steel for Building
- Steel Framing all Doors
- All Bolts and Fasteners for Erection including Color-Matched screws
- Gutters and Downspouts
- EZ Seal Insulation for Roof
- 26 Gauge Steel Classic Rib Paneling Siding and Roofing
- 2 TelStar Steel 3' X 6'8" Steel Door
- 4 Clopay Canister Doors 10' X 8'